

Length // ► Feed direction

Width



# SR10 U30

Figure drawn to scale 1:1

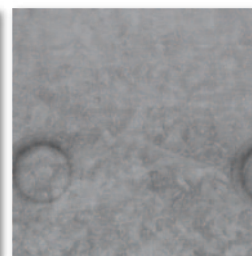
## SR10 U30



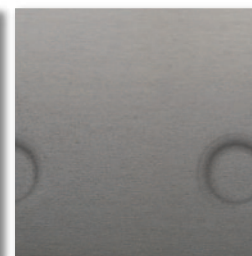
### Available materials\*



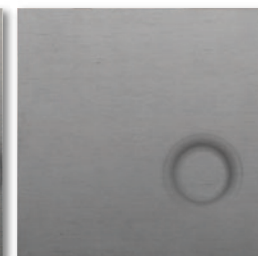
Steel



Sendzimir-galvanised



Aluminium



Stainless steel

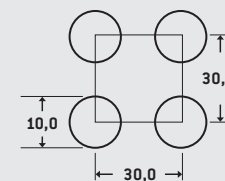


Brass



Powder-coated

Available in standard formats and **individual dimensions (w x l) of at least 125 x 300 mm to maximum 1,500 x 3,000 mm**, as well as in sheet thicknesses from 1.5 to 2.0 mm.



Textured sheet  
Texture depth approx. 0.3 mm.  
The flatness of perforated sheets is almost achieved during straightening.  
There is no slip resistance acc. to DIN 51 130.

\* Not all materials available in all formats and sheet thicknesses.



### SELECT AND ORDER ONLINE

All variants of this product can be found online in our shop. **Simply enter the product name in the online search.**

